

THE PAGER TOOL GUIDE



This powerful tool will allow you to completely modify products. Nodes can be moved, added, deleted, resized or rotated. The modified nodes will accept images, text and backgrounds of your choice. The ability to add text color, image opacity, drop shadows and grid constraints, will give you the freedom to create your own product

Select PAGER start button to bring up the PAGER tool set.

IMAGE Button 

Select the image button to move an image once it has been dropped into a node. Usage is the same as in a standard layout. Click and hold the mouse button and drag it to the desired crop.

DRAW Button 

Select the draw button to create new image nodes in a template.

T DRAW Button 

Select the T draw button to create new text nodes in a template.

SAVE Button 

Select the save button after completing your node additions and modifications to retain the new template for future use. A dialog box will open, simply type a new name for the item and press enter to save it. You will see the new template appear in the MY TEMPLATES window.

NODE CREATION/MODIFICATION/DELETION

To Create a Node:

- 1.) Click on the draw button to start an image node, or text draw to start a text node.
- 2.) Move your cursor into the template's layout on the location the node should begin.
- 3.) Click and drag the cursor towards the point you would like the node to end and you will see the node begin to draw. You can hold the mouse button down and adjust as long as needed to create the desired size. Simply release the mouse button when you are done to see the created node.

To Modify a Node:

EDIT Button 

To alter a node, click the edit button and move your mouse over the nodes in the layout. Once inside/on a node, you will see the mouse cursor change to one of the following below, depending upon the cursor's location:

Editing a node without changing the size: This can be done by either moving the node completely or by rotating it.

Moving a node: If you hold your mouse in the center of a node, this cursor will appear to allow you to move it. Click and drag to a new desired location on the layout.

Rotate a node: If you hold your mouse just inside a node's corner this cursor will appear to allow you to rotate it. Click and drag to a new desired location on the layout.

Editing a node's size: Resizing a node can be done from either the sides or the corners.

From the sides: If you hold your mouse over one of the node's sides, this cursor will appear to allow you to alter the node's height and width. Click and drag the side in towards the center of the node to reduce the size or away from the center to increase it.

From the corners: If you hold your mouse over one of the node's corners, this cursor will appear to allow you to alter the node's height and width. Click and drag the corner in towards the center of the node to reduce the size or away from the center to increase it.

To remove a node, right-click on it and select remove node.



Use of the layer buttons allows you to put one newly created node over or behind another.



The grid button allows you to view and set spacing on a visible grid that can be used to arrange nodes against.

ADDITIONAL DESIGN CAPABILITIES

The PAGER offers the ability to add various design elements to the layouts and created nodes. There are built in options for adding color options, shading and shadowing, and studio-supplied backgrounds and masks. The labs may also provide additional options, such as background, border, and mask images as well as font type and image tone selections.



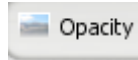
The stroke button allows you to add color strokes to selected nodes. A screen will appear to allow you to set the width, colors and opacity settings. TIP: try to select fairly standard colors-some color ranges may not transfer well through photographic printing, rendering the printed result slightly different from what was submitted.



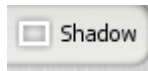
The fill button allows you to add color backgrounds to the layouts. A screen will appear, allowing you to set the color and opacity settings. TIP: try to select fairly standard colors-some color ranges may not transfer well through photographic printing. The printed result may vary slightly different from what was submitted.

TEXT Button

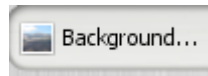
The text button allows you to set text colors on created text nodes. A screen will appear, allowing you to set width, colors, and opacity settings. TIP: try to select fairly standard colors- some color ranges may not transfer well through photographic printing. The printed result may vary slightly different from what was submitted.

OPACITY Button

The opacity button allows you to add an opaque mask to a node. The opacity slider allows you to set the level of opacity on the current selected node.

SHADOW Button

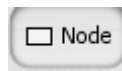
The shadow button allows you to add a drop shadow to the current selected node. A screen will appear offering sliders to set the blur level, opacity level, X location and Y location.

BACKGROUND/MASK Button

The background and mask buttons allow you to add in your own image as a background for the layout or as a mask on a node. Selecting either button will bring up a browse window of the local system to locate the desired image.

TEMPLATE Button

The template button allows you to select from various lab supplied options for the layout, such as borders or backgrounds. A list will appear with selectable items.

NODE Button

The node button allows you to select from various lab supplied options to apply to individual nodes, such as font types or image tone selections. A list will appear with selectable items.

